

# NAUGHTY

Bright, swung

MATILDA:



Jack and Jill went up the hill to



fetch a pail of wa - ter, So they say, The



sub - se - quent fall was in - e - vi - ta - ble, They



ne - ver stood a chance, they were writ-ten that way. I



won-der why they did -n't just change their sto - ry.



We're told we have to do what we're

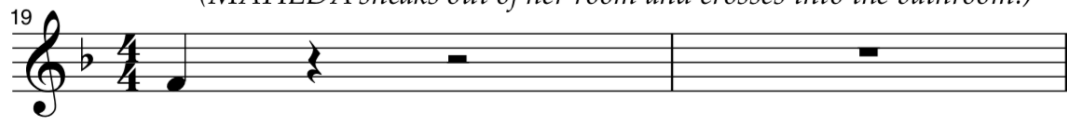


told, but sure - ly...



Some-times you have to be a lit - tle bit naugh -


*(MATILDA sneaks out of her room and crosses into the bathroom.)*



ty!




Just be - cause you find that life's — not fair, — It

23   
does - n't mean that you just have to grin and bear — it.


25   
If you al - ways take it on the chin and wear it, *relaxed*

27   
Noth - ing will change. Ev -

29   
- ven if you're lit - tle, you can do a lot, — You must -

31   
- n't let a lit - tle thing like lit - tle stop — you.

33   
If you sit a - round and let them get on top, — You


35   
might as well be say - ing you think that it's O - K and

37    
 that's not right. And if it's not right,

41    
 You have to put it right. But

44    
 no - bo - dy else — is gon-na put it right for me,

46    
 No - bo - dy but me is gon-na change my sto - ry,

48    
 Some-times you have to be a lit-tle bit naugh-ty!